

VELUX Lookbook

Visualizing how skylights transform a space.



Table of Contents

3	Introduction to the VELUX Daylight Visualizer
4	VELUX Daylight Visualizer process
5	Bringing materials to life
6	Why skylights are so important
8	Living room and kitchen - Why daylight?
10	Staircase - Total transformation
12	Bathroom - Better air flow
14	Bathroom - Sunny bathroom
16	Bedroom - Waking up to natural light
18	Bedroom - Going green
22	Bonus room - Room in the roof
23	Closet - Bring daylight to every corner of your home
24	VELUX Blind Collection & Daylight control
25	How to choose your No Leak Skylight
26	Deck Mount Skylights
27	Roof Windows
28	Curb Mount Skylights
29	Flat Roof Skylights
30	Select the right skylight glass
31	Select the right flashing
32	Select your blind
34	Sun Tunnel™ Skylights
35	Limited Warranty Summary



Simulated image using VELUX Daylight Visualizer



Actual photograph of finished home (photo: Adam Mørk)

Introduction to the VELUX Daylight Visualizer

The images in this brochure were created using 3D design software in conjunction with the VELUX Daylight Visualizer's scientifically-accurate lighting calculations to show the dramatic impact skylights bring to a room.

Daylight Visualizer is a professional lighting simulation tool for the analysis of daylight conditions in buildings. It is intended to promote the use of daylight and to aid professionals by accurately predicting and documenting daylight levels and appearance of a space prior to execution of the design.

The difference between Daylight Visualizer and other commonly used 3D visualization programs is that it permits you to accurately simulate and quantify daylight levels in interiors, whereas 3D visualization programs only generate images, without information about the quantity and quality of light in a given space. With Daylight Visualizer you can make more informed decisions about daylight performance in your architectural design.



VELUX Daylight Visualizer simulation

VELUX Daylight Visualizer process

Daylight Visualizer's light calculations are much more realistic and precise than those used even in today's leading 3D rendering and modeling programs.

To certify a realistic look, the furnished model is imported into Daylight Visualizer where variables

such as location, directional orientation, time, and daylight level are adjusted.

With the camera in the desired location, Daylight Visualizer renders a simulated image based on the variable inputs (above).



Light-corrected Adobe 3DS Max simulation

Bringing materials to life

Because the Daylight Visualizer software specializes in light simulation, the model is then brought back into 3D modeling software that can better apply and represent the properties of more complex

surfaces (such as cloth, wood, leather, etc.). Surface textures are then applied and lighting values are adjusted to be consistent with Daylight Visualizer’s models.

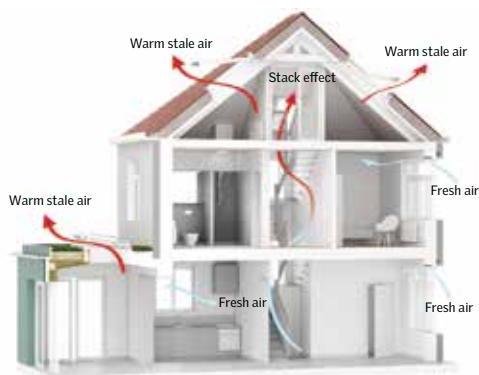
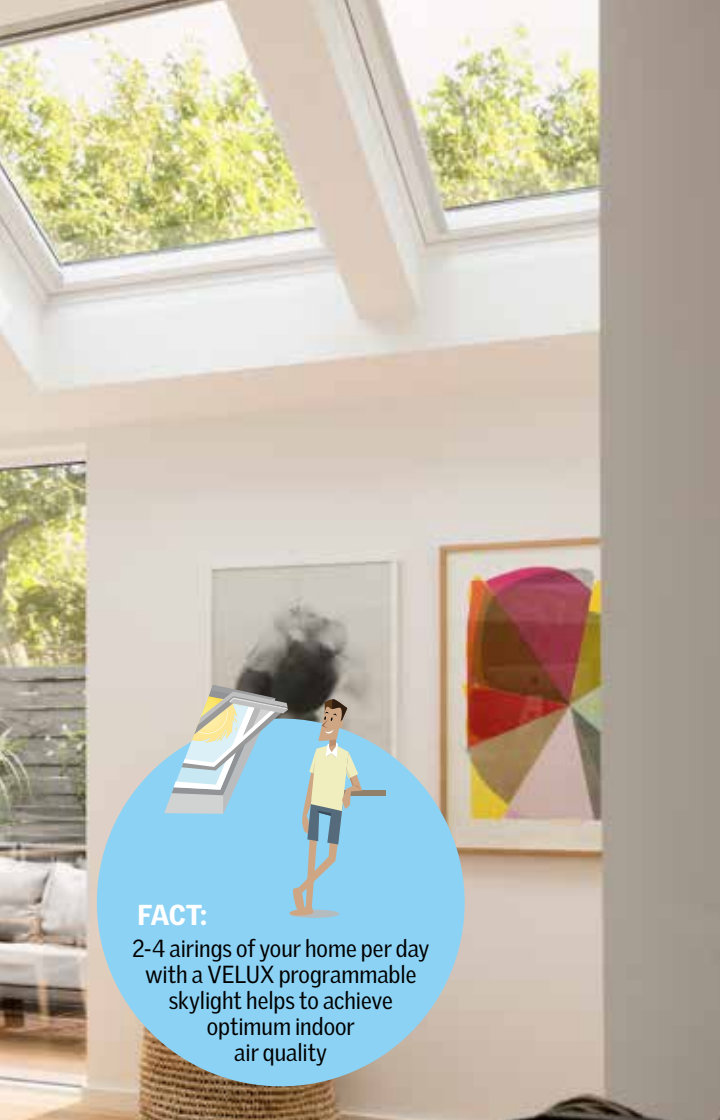


The Indoor Generation



Why skylights are so important

Getting the right amount of daylight is essential for our health and well-being; it improves our mood and fights Seasonal Affective Disorder (SAD). Skylights can deliver 2 times the amount of daylight as vertical windows greatly reducing the need for artificial light and lowering electricity costs. Skylights and Sun Tunnels are a perfect solution to getting the right amount of natural light into your home. We spend 90% of our time indoors and we need the right levels of daylight. Add drama and style to your home!



Hot air rises and cold air sinks. This is the underlying concept of the stack effect, a design approach that greatly enhances natural airflow and ventilation in homes. The stack effect promotes skylights and vertical windows working together to achieve optimal indoor air performance.

As the vertical windows circulate the air within the space, hot air, odours, and toxins rise to the highest point in the home. By opening your skylight those gases escape through the roof creating a healthier indoor environment. You can also reduce the need for air conditioning in the summer months saving on electricity.

Enjoy a good night's sleep and love your home again!



Living room and kitchen

VELUX Skylight

*Lighting conditions:
May / 10:30AM / intermittent clouds*

Why daylight?

Daylight is essential for sustainable urban development and is an important factor to consider when designing buildings and shaping our homes. Daylight helps to balance our 24-hour Circadian—or bodily—rhythm, and is vital to our general health and well-being. Nevertheless, buildings

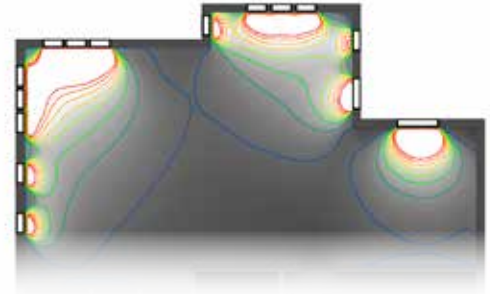
often do not always make optimal use of daylight.

VELUX offers roof windows and skylights with options that allow you to take advantage of daylight and views when your roofline or building code does not permit vertical window placement.



Before

*Lighting conditions:
May / 10:30AM / intermittent clouds*

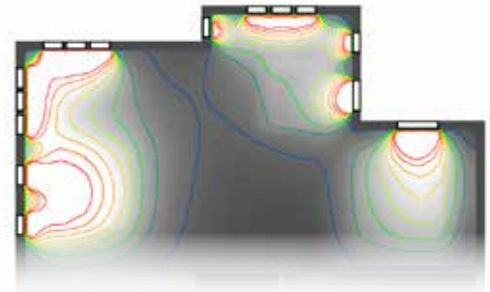


*Plan view
daylight calculations before skylight*



After

*Lighting conditions:
May / 10:30AM / intermittent clouds*



*Plan view
daylight calculations after skylight*



Staircase

VELUX Skylight

Lighting conditions:
June / 11:00AM / sunny

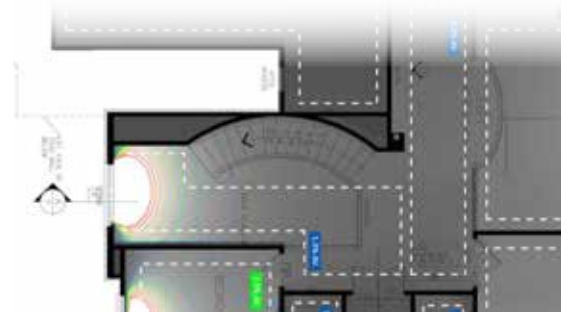
Total transformation

Stairwells don't have to be neglected and boring spaces. Add skylights to these usually dark areas and create a brilliantly bright, open and safer space.



Before

*Lighting conditions:
June / 11:00AM / sunny*

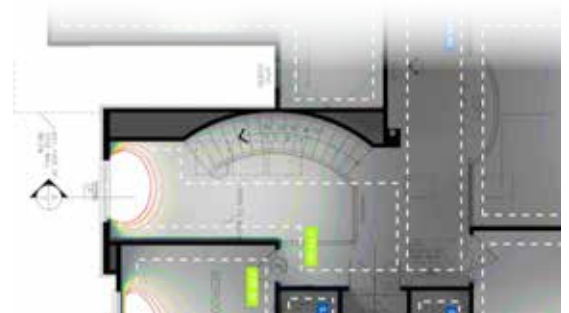


*Plan view
daylight calculations before skylight*



After

*Lighting conditions:
June / 11:00AM / sunny*



*Plan view
daylight calculations after skylight*



Bathroom

VELUX Skylight

*Lighting conditions:
June / 11:00AM / sunny*

Better air flow

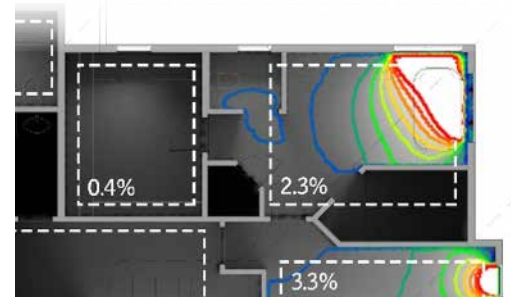
Poor ventilation can result in various problems and discomforts, from mold to difficulty breathing. Natural ventilation can prevent these issues much better than air conditioning.

You can remove your vertical window and replace it with a VELUX skylight. You'll gain an extra wall to add a bath or double vanity—adding a little luxury to your home.



Before

*Lighting conditions:
June / 11:00AM / sunny*

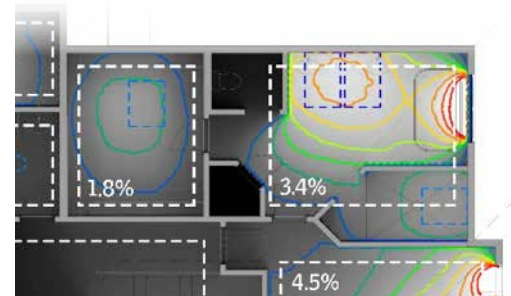


*Plan view
daylight calculations before skylight*



After

*Lighting conditions:
June / 11:00AM / sunny*



*Plan view
daylight calculations after skylight*



Bathroom

VELUX Skylight

Lighting conditions:
June / 11:30AM / sunny

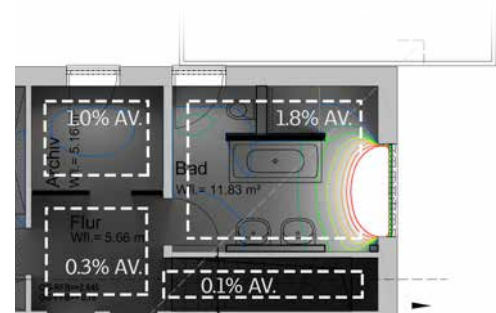
Sunny bathroom

Brighten your bathroom by flooding light in with VELUX skylights. Even bathrooms with darker tones can look bright and clean with the addition of daylight from above.



Before

Lighting conditions:
June / 11:30AM / sunny

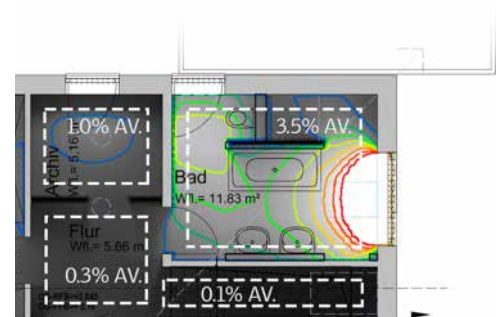


Plan view
daylight calculations before skylight



After

Lighting conditions:
June / 11:30AM / sunny



Plan view
daylight calculations after skylight



Bedroom

VELUX Skylight

*Lighting conditions:
June / 12:00PM / intermittent clouds*

Waking up to natural light

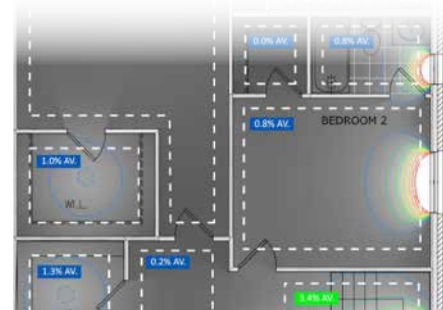
Sunlight provides Vitamin D that leads to more calcium absorption and stronger bones. The amount of daylight we experience impacts our health and well-being. Creating living spaces that bring in natural light can help people receive the light they need.

For those who would rather sleep in, double pleated blinds can convert day into night, blocking even the brightest sunlight, which makes it ideal for rooms that require total room darkening, such as bedrooms. More information on page 22.



Before

*Lighting conditions:
June / 12:00PM / intermittent clouds*

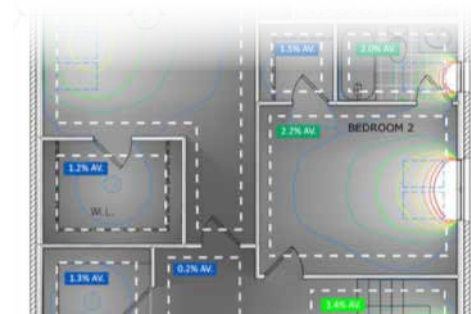


*Plan view
daylight calculations before skylight*



After

*Lighting conditions:
June / 12:00PM / intermittent clouds*



*Plan view
daylight calculations after skylight*



Bedroom

VELUX Skylight

Lighting conditions:
October / 12:00PM / sunny

Going green

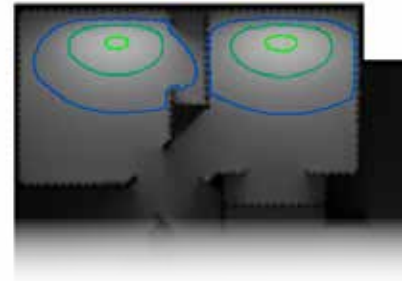
Top daylighting has been shown to not only improve the overall health and well-being of occupants, but also significantly reduces the reliance on electric lighting, therefore reducing energy consumption.

High quality, energy efficient skylights are an important part of building today's green-friendly homes and buildings. The effect natural light has on a person physically, emotionally, and psychologically is well-documented.



Before

*Lighting conditions:
October / 12:00PM / sunny*

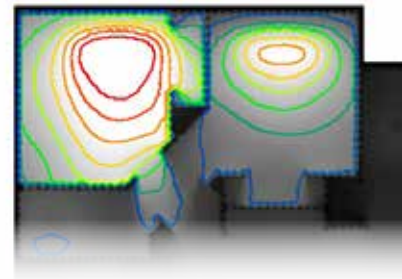


*Plan view
daylight calculations before skylight*



After

*Lighting conditions:
October / 12:00PM / sunny*



*Plan view
daylight calculations after skylight*



Bonus room

VELUX Roof window

*Lighting conditions:
August / 2:00PM / sunny*

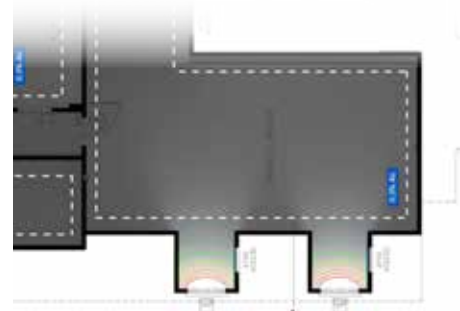
Room in the roof

With "room in the roof," you can improve the consumer appeal and lower your average per square foot cost by nine percent. This can increase the profitability of your homes and give you a tremendous competitive advantage in today's market.



Before

*Lighting conditions:
August / 2:00PM / sunny*

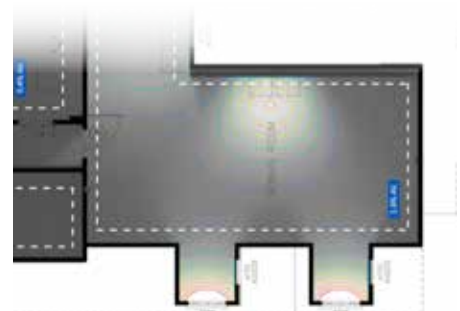


*Plan view
daylight calculations before skylight*



After

*Lighting conditions:
August / 2:00PM / sunny*



*Plan view
daylight calculations after skylight*



Closet

VELUX Skylight

Lighting conditions:
August / 10:00AM / sunny

Bring daylight to every corner of your home

VELUX Sun Tunnel skylights bring natural light into even the darkest and most isolated spaces through a specially designed tunnel that passes from roof to ceiling.

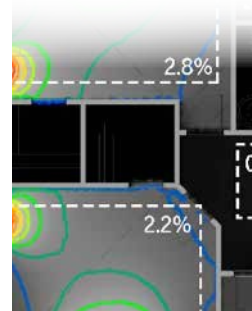
Adding a Sun Tunnel skylight is a cost-effective way to add natural light to spaces

such as closets, powder and laundry rooms, hallways or other tight spaces that need a brighter, more vibrant appearance. Their low-profile design creates a sleek appearance on any roof line, and their pre-fabricated light tunnel makes them quick and easy to install.



Before

*Lighting conditions:
August / 10:00AM / sunny*

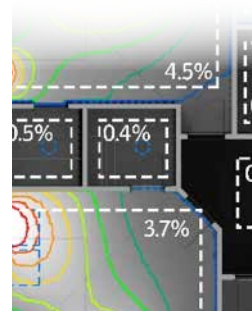


*Plan view
daylight calculations before skylight*



After

*Lighting conditions:
August / 10:00AM / sunny*



*Plan view
daylight calculations after skylight*



VELUX Blind Collection

The VELUX Blind Collection can help turn an ordinary room into something special. With **over 50 colours and pattern choices available**, you can design your space to reflect your personality. Special order skylight blinds are not pre-installed with your skylight order and may ship separately. Skylight blinds are solar powered remote-operated, or manually-operated.

For more information visit: veluxblinds.ca

Daylight control

Room darkening blinds can convert day into night, blocking even the brightest sunlight, making it ideal for rooms that require room darkness, such as bedrooms. The double pleated blind honeycomb structure also provides additional energy efficiency.

Room darkening (Double pleated)

- *Blackout cloth with honeycomb structure*
- *Neat pleats*

Standard blinds colours



White



Beige



Light filtering blinds soften and diffuse incoming light providing privacy and light control while reducing glare. The single pleated blinds are ideal for rooms that do not require total darkness such as office, kitchens and living rooms.

Light filtering (Single pleated)

- *Softens and diffuses incoming light*
- *Neat pleats*

Standard blinds colours



White



Classic sand



How to choose your No Leak Skylight

Step 1: Select your installation method

- Deck Mount Skylight
- Roof Window
- Curb Mount Skylight
- Flat Roof Skylight
- Sun Tunnel™ Skylight

Step 2: Select the right skylight glass

- Out-of-reach glass options
- In-reach glass option

Step 3: Select the right flashing kit

An essential component to our No Leak Skylight System is the flashing. There are different flashing kits designed to work with all types of roofs. It's important to confirm with your installer the type of flashing kit.

Step 4: Select your blind

The VELUX Blind Collection allows you to control your climate. Our blinds come in a variety of colours to suit your decor style and plays an important role in managing heat and light.



Step 1: Select your installation method

Deck Mount Skylights

Out-of-reach applications



VSS – Solar Powered Venting



Size	C01	C04	C06	C08	M02	M04	M06	M08	S01	S06
Outside frame (W" x H")	21 1/2 x 27 3/8	21 1/2 x 38 3/8	21 1/2 x 46 1/4	21 1/2 x 54 15/16	30 9/16 x 30 1/2	30 9/16 x 38 3/8	30 9/16 x 46 1/4	30 9/16 x 54 15/16	44 3/4 x 27 3/8	44 3/4 x 46 1/4
Rough opening (W" x H")	21 x 26 3/8	21 x 37 3/8	21 x 45 3/4	21 x 54 3/8	30 1/16 x 30	30 1/16 x 37 3/8	30 1/16 x 45 3/4	30 1/16 x 54 3/8	44 1/4 x 26 3/8	44 1/4 x 45 3/4



VSE – Electric Venting



Size	C01	C04	C06	C08	M04	M06	M08	S01	S06
Outside frame (W" x H")	21 1/2 x 27 3/8	21 1/2 x 38 3/8	21 1/2 x 46 1/4	21 1/2 x 54 15/16	30 9/16 x 38 3/8	30 9/16 x 46 1/4	30 9/16 x 54 15/16	44 3/4 x 27 3/8	44 3/4 x 46 1/4
Rough opening (W" x H")	21 x 26 3/8	21 x 37 3/8	21 x 45 3/4	21 x 54 3/8	30 1/16 x 37 3/8	30 1/16 x 45 3/4	30 1/16 x 54 3/8	44 1/4 x 26 3/8	44 1/4 x 45 3/4

In-reach applications



VS – Manual Venting



Size	C01	C04	C06	C08	M02	M04	M06	M08	S01	S06
Outside frame (W" x H")	21 1/2 x 27 3/8	21 1/2 x 38 3/8	21 1/2 x 46 1/4	21 1/2 x 54 15/16	30 9/16 x 30 1/2	30 9/16 x 38 3/8	30 9/16 x 46 1/4	30 9/16 x 54 15/16	44 3/4 x 27 3/8	44 3/4 x 46 1/4
Rough opening (W" x H")	21 x 26 3/8	21 x 37 3/8	21 x 45 3/4	21 x 54 3/8	30 1/16 x 30	30 1/16 x 37 3/8	30 1/16 x 45 3/4	30 1/16 x 54 3/8	44 1/4 x 26 3/8	44 1/4 x 45 3/4

Fixed non-opening applications



FS – Fixed



Size	A06	C01	C04	C06	C08	C12	D26	D06	M02	M04	M06	M08	S01	S06
Outside frame (W" x H")	15 1/4 x 46 1/4	21 1/2 x 27 3/8	21 1/2 x 38 3/8	21 1/2 x 46 1/4	21 1/2 x 54 15/16	21 1/2 x 70 3/4	23 1/4 x 23 3/8	23 1/4 x 46 1/4	30 9/16 x 30 1/2	30 9/16 x 38 3/8	30 9/16 x 46 1/4	30 9/16 x 54 15/16	44 3/4 x 27 3/8	44 3/4 x 46 1/4
Rough opening (W" x H")	14 1/2 x 45 3/4	21 x 26 3/8	21 x 37 3/8	21 x 45 3/4	21 x 54 3/8	21 x 70 3/4	22 1/2 x 22 3/8	22 1/2 x 45 3/4	30 1/16 x 30	30 1/16 x 37 3/8	30 1/16 x 45 3/4	30 1/16 x 54 3/8	44 1/4 x 26 3/8	44 1/4 x 45 3/4

Works with 24" on centre roof truss.



VELUX Recommended

Step 1: Select your installation method

Roof Windows

GGL Centre pivoting roof window



GPL Top hinged roof window



Available sizes

				NEW				NEW	
Size code	CK06	FK06	MK04	MK06	MK08	PK10	SK06	UK04	UK08
Outside frame (W" x H")	21 3/8 x 46 3/8	26 x 46 3/8	30 5/8 x 38 1/2	30 3/4 x 46 3/8	30 5/8 x 55	37 1/8 x 63	44 1/8 x 46 3/8	52 3/4 x 38 1/2	52 3/4 x 55 1/8
Rough opening (W" x H")	22 1/8 x 46 7/8	26 1/2 x 46 7/8	31 1/4 x 39	31 1/4 x 46 7/8	31 1/4 x 55 1/2	37 5/8 x 63 1/2	45 5/8 x 46 7/8	53 1/4 x 39	53 1/4 x 55 1/2

*Varnished pine and polyurethane models available for roof windows. Call VELUX for more information.

GXL Roof access window



Available size

	FK06
Outside frame (W" x H")	26 x 46 3/8
Rough opening (W" x H")	26 1/2 x 46 7/8

GDL Cabrio balcony roof window



Available sizes

	PK19	SK19
Outside frame (W" x H")	37 1/8 x 99 1/4	44 7/8 x 99 1/4
Rough opening (W" x H")	37 5/8 x 99 3/4	45 3/8 x 99 3/4

Step 1: Select your installation method

Curb Mount Skylights

Out-of-reach applications



VCS – Solar Powered Venting



Size	2222	2234	2246	3030	3046	3434	4622	4646
Inside curb/ rough opening (W" x H")	22 1/2 x 22 1/2	22 1/2 x 34 1/2	22 1/2 x 46 1/2	30 1/2 x 30 1/2	30 1/2 x 46 1/2	34 1/2 x 34 1/2	46 1/2 x 22 1/2	46 1/2 x 46 1/2
Outside curb (W" x H")	25 1/2 x 25 1/2	25 1/2 x 37 1/2	25 1/2 x 49 1/2	33 1/2 x 33 1/2	33 1/2 x 49 1/2	37 1/2 x 37 1/2	49 1/2 x 25 1/2	49 1/2 x 49 1/2
Maximum Skylight Clearance (W" x H")	26 % x 26 %	26 % x 38 %	26 % x 50 %	34 % x 34 %	34 % x 50 %	38 % x 38 %	50 % x 26 %	50 % x 50 %



VCE – Electric Venting



Size	2222	2234	2246	3030	3046	3434	4646
Inside curb/ rough opening (W" x H")	22 1/2 x 22 1/2	22 1/2 x 34 1/2	22 1/2 x 46 1/2	30 1/2 x 30 1/2	30 1/2 x 46 1/2	34 1/2 x 34 1/2	46 1/2 x 46 1/2
Outside curb (W" x H")	25 1/2 x 25 1/2	25 1/2 x 37 1/2	25 1/2 x 49 1/2	33 1/2 x 33 1/2	33 1/2 x 49 1/2	37 1/2 x 37 1/2	49 1/2 x 49 1/2
Maximum Skylight Clearance (W" x H")	26 % x 26 %	26 % x 38 %	26 % x 50 %	34 % x 34 %	34 % x 50 %	38 % x 38 %	50 % x 50 %

In-reach applications



VCM – Manual Venting



Size	2222	2234	2246	3030	3046	3434	4646
Inside curb/ rough opening (W" x H")	22 1/2 x 22 1/2	22 1/2 x 34 1/2	22 1/2 x 46 1/2	30 1/2 x 30 1/2	30 1/2 x 46 1/2	34 1/2 x 34 1/2	46 1/2 x 46 1/2
Outside curb (W" x H")	25 1/2 x 25 1/2	25 1/2 x 37 1/2	25 1/2 x 49 1/2	33 1/2 x 33 1/2	33 1/2 x 49 1/2	37 1/2 x 37 1/2	49 1/2 x 49 1/2
Maximum Skylight Clearance (W" x H")	26 % x 26 %	26 % x 38 %	26 % x 50 %	34 % x 34 %	34 % x 50 %	38 % x 38 %	50 % x 50 %

Fixed non-opening applications



FCM – Fixed Curb Mount*



Size	1430	1446	2222	2230	2234	2246	2270	3030	3046	3434	3446	4646	3055	3072	4672
Inside curb/ rough opening (W" x H")	14 1/2 x 30 3/8	14 1/2 x 46 1/8	22 1/2 x 22 1/2	22 1/2 x 30 3/8	22 1/2 x 34 1/8	22 1/2 x 46 1/8	22 1/2 x 70 1/8	30 1/2 x 30 3/8	30 1/2 x 46 1/8	34 1/2 x 34 1/8	34 1/2 x 46 1/8	46 1/2 x 46 1/8	30 1/2 x 54 1/8	30 1/2 x 72 1/8	46 1/2 x 72 1/8
Outside curb (W" x H")	17 1/2 x 33 1/8	17 1/2 x 49 1/8	25 1/2 x 25 1/2	25 1/2 x 33 1/8	25 1/2 x 37 1/8	25 1/2 x 49 1/8	25 1/2 x 73 1/8	33 1/2 x 33 1/8	33 1/2 x 49 1/8	37 1/2 x 37 1/8	37 1/2 x 49 1/8	49 1/2 x 49 1/8	33 1/2 x 57 1/8	33 1/2 x 75 1/8	49 1/2 x 75 1/8
Maximum Skylight Clearance (W"	18 % x 34 %	18 % x 50 %	26 % x 26 %	26 % x 34 %	26 % x 38 %	26 % x 50 %	26 % x 74 %	34 % x 34 %	34 % x 50 %	38 % x 38 %	38 % x 50 %	50 % x 50 %	34 % x 59	34 % x 76 1/2	50 % x 76 1/2

*FCM can be turned sideways.



Step 1: Select your installation method

Flat Roof Skylights

CFP Flat roof skylight



- Available as large as 5' x 5'.

CVP Flat roof manual venting skylight



- Manual venting flat roof skylight with control rod.
- Insect screen not available.
- Available as large as 4' x 4'.

CFP & CVP available

sizes									
Size code	6060	6090	8080	9090	90120	100100	100150	120120	150150
Rough opening (W x H) cm	60 x 60	60 x 90	80 x 80	90 x 90	90 x 120	100 x 100	100 x 150	120 x 120	150 x 150
Rough opening (W" x H")	23 3/8 x 23 3/8	23 3/8 x 35 7/16	31 1/2 x 31 1/2	35 1/8 x 35 1/8	35 1/8 x 47 1/4	39 3/8 x 39 3/8	39 3/8 x 59	47 1/4 x 47 1/4	59 x 59
Exterior frame (W" x H")	30 1/16 x 30 1/16	30 1/16 x 42 1/2	38 5/16 x 38 5/16	42 1/2 x 42 1/2	42 1/2 x 54 3/16	46 7/16 x 46 7/16	46 7/16 x 66 1/8	54 3/16 x 54 3/16	66 1/8 x 66 1/8
● All models ● CFP model only									

*Blinds available in all sizes except CFP 150150

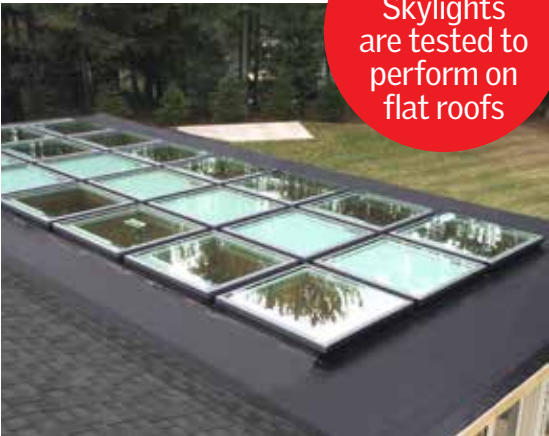
CXP Flat roof exit



- Provides roof access to flat roofs.
- Sleek internal appearance with a 60° opening angle.
- Insect screen not available.
- Available as large as 4' x 4'.

CXP available sizes

Size code	90120	100100	120120
Rough opening (W x H) cm	90 x 120	100 x 100	120 x 120
Rough opening (W" x H")	35 1/8 x 47 1/4	39 3/8 x 39 3/8	47 1/4 x 47 1/4
Exterior frame (W" x H")	42 1/2 x 54 3/16	46 7/16 x 46 7/16	54 3/16 x 54 3/16



Curb Mount Skylights are tested to perform on flat roofs

Step 2: Select the right skylight glass

Out-of-reach glass options

Laminated glass with Neat® coating

Dual pane laminated glass is standard on all venting models.



CleanComfortPlus glass (04 code)

- Exterior tempered safety glass.
- Triple coated with LoE, dual sealed and injected with Argon gas.
- Laminated interior pane for added safety and protection from UV rays.
- Excellent energy efficiency and thermal performance.



CleanEnergyPlus glass (10 code)

- Exterior tempered safety glass.
- Triple coated with LoE, dual sealed and injected with Argon gas.
- Tempered and laminated inner pane for additional strength for high snowload.
- High energy efficiency and thermal performance.

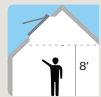
Benefits of Laminated Glass with Neat® coating

Silicon dioxide makes Neat® glass a smoother surface allowing for water to disperse evenly and evaporate quickly reducing water spots.



Clean

Features Neat® glass coating to keep your skylight cleaner, longer, leaving skylights virtually spotless.



Safe

VELUX recommends laminated glass for out-of-reach applications. Standard on all venting skylight models.



Hail warranty*

10 year warranty on laminated glass with Neat® coating on cracking or breakage due to hail.



Quiet

Reduce unwanted outside noise by up to 25% less than a standard double pane glass, and up to 50% less than a plastic skylight.

Out-of-reach tempered glass options

Triple pane

Triple pane provides 3 layers of glass and is suitable for out-of-reach applications.



Triple pane laminated (29 code)

- Exterior 2 panes are tempered safety glass.
- Inner pane is laminated glass.
- Triple coated with LoE, dual sealed and injected with Argon gas.
- High energy efficiency and thermal performance.
- Available in select FCM sizes.
- **Meets Vancouver building code.**



Triple pane (30 code)

- 3 layers of tempered safety glass.
- Triple coated with LoE, dual sealed and injected with Argon gas.
- Protects against fade-causing UV rays.
- High energy efficiency and thermal performance.
- Available in select FCM sizes.

In-reach glass option

Tempered glass

Tempered glass has been triple coated with LoE, dual sealed and injected with Argon gas.



Comfort glass (05 code)

- Exterior and interior tempered glass.
- Triple coated with LoE, dual sealed and injected with Argon gas.
- Basic glass for fixed in-reach skylights.

*Hail warranty is subject to certain conditions. Call VELUX for more information. ComfortPlus glass for Roof Windows includes a single layer of LoE. Other glazings available, call for details.



VELUX Recommended

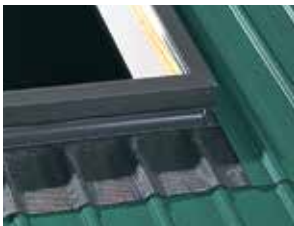
Step 3: Select the right flashing kit

An essential component to our No Leak Skylight System is the flashing. There are different flashing kits designed to work with all types of roofs. It's important to confirm with your installer the type of flashing kit.

Deck Mount Options



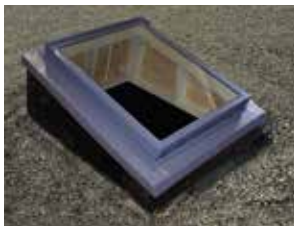
EDL – Shingles/shakes
Step flashing pieces interweave with roofing material for proper water drainage.



EDM – Metal roof flashing
Flashing pieces interlock with roofing material for a weather tight installation.

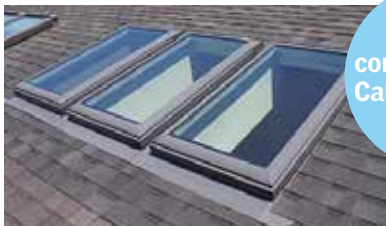


EDW – High profile flashing
Flashing kit for high profile roofing materials such as concrete tiles, Spanish tiles, cedar shakes, etc.



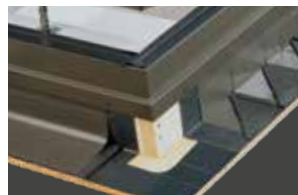
ECB – Low slope flashing
Used with site-built curb on low-slope roofs.

EKL/EKW – VELUX Combination System
Used to install multiple skylights in groups for dramatic installations.



Endless combinations!
Call for design ideas.

Curb Mount Options



ECL – Shingles/shakes
Step flashing pieces interweave with roofing material for proper water drainage. For use with shingles or shakes less than 3/4" thick.



ECW – High profile flashing
Flashing kit for high profile roofing materials such as concrete tile, cedar shake, etc. For use with metal roofing, tiles or shakes more than 3/4" thick.

Step 4: Select your blind

The VELUX Blind Collection allows you to control your climate. Our blinds come in a variety of colours to suit your decor style and plays an important role in managing heat and light.



Room Darkening Blind (Double pleated)

Recommended for room type:



- Blocks most incoming light.
- Energy efficient, highly insulated design.
- Provides absolute privacy.
- Solar powered or manual operation.



Light Filtering Blind (Single pleated)

Recommended for room type:



- Softens and diffuses incoming light.
- Provides privacy and light control.
- Reduces glare.
- Solar powered or manual operation.



Venetian Blind (Aluminium)

Recommended for room type:



- Control both direction and amount of incoming light.
- Maintain view of outdoors.
- Moisture resistant.
- Manual operation only.



Duo Blind (Roof windows only)

Recommended for room type:



- Combination blackout and single pleated blind.
- Combines total blackout with light diffusing in any ratio at any level on the window.
- Available in white/beige.
- Manual operation only.

*Custom sizes available to a maximum of 50¾" X 76½". Call VELUX for details.

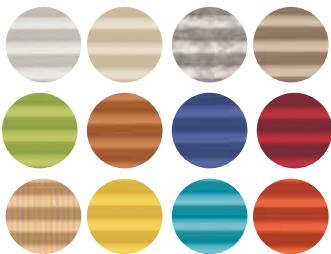
**Blinds are not available for the FCM 1430, 1446, 3055, 3072, 4672 size.

Visit
veluxblinds.ca
to order
your blind



The ultimate control

Choose the blind colour that suits your personal style and home decor. The current VELUX Blind Collection is available for skylights manufactured in 2010 and later. For customers who have skylights manufactured before 2010 please call VELUX for blind options.



Colour options

Over 50 colours to choose from, your VELUX Blind will accent any space in your home.

Sun Tunnel™ Skylights

Step 1: Determine light coverage to find your model and number of units required

Roof Exposure	Light Coverage*		
	< 150 sq. ft	150 - 200 sq. ft	200 - 325 sq. ft
All exposures	TMR 010	TMR 010/014	TMR 014
South exposures	TGR 010	TGR 010/014	TGR 014/022
	TGF 014	TLR 014	TCR 022
Flat roof	TCR 014		

Small/square spaces

- If < 150 sq. ft 1 unit required.

- If 200 sq. ft + consider rigid or multiple units.

Narrow/rectangular spaces



Step 2: Choose your recommended model

Rigid Tunnel Models

Maximum light output and easy to install. Ideal for straight runs with some flexibility, up to 90°. Comes with 4' tunnel in box. Tunnel can run up to 20' for 10", 25' for 14" and 30' for 22" models.



TMR
Pitched flashing
Highest light output, most versatile and commonly used model.

TGR
Low profile flashing
Lower exterior profile designed for south facing exposures.

TLR
Low profile flat glass
Creates a sleek appearance on the roof and is ideal for south facing exposures.

TCR
Flat roof flashing
Designed for flat roofs providing a balanced light output.

Flexible Tunnel Models

For attics with many obstructions. Comes with 8' of tunnel in the box. Tunnel runs up to 8' for 14" and 12' for 22" models.



TMF
Pitched flashing
Flexible tunnel for attics with many obstructions.

TGF
Low profile flashing
Flexible tunnel for attics with many obstructions and south facing exposures.

Step 3: Sun Tunnel extensions



ZTR – Rigid tunnel extensions

ZTR – Rigid tunnel extensions

For longer tunnel runs 2', 4' and 6' tunnel extension pieces are available, in 2' increments.

ZTF – Flexible tunnel replacement

12' flexible tunnel that replaces the standard 8' flexible tunnel. Available for the 22" model only.

Step 4: Added energy efficiency



ZTC 41 – Energy kit

Increases the energy efficiency of VELUX Sun Tunnels in extreme temperatures and ensures Energy Star qualification. Required for all new construction and strongly recommended for the Canadian climate.



Limited Warranty Summary

This Warranty applies to products manufactured as of January 1st, 2010. Please contact VELUX for warranty information for product manufactured prior to 2010.

VELUX Skylights & Roof Windows

20 YEARS:

Parts on seal failure (moisture between glass panes).

10 YEARS:

Parts for defective skylights, roof windows and flashings.

10 YEARS:

Laminated glass with Neat® coating and triple pane products on cracking or breakage due to hail.

VELUX Sun Tunnel Skylights

10 YEARS:

Parts (corrosion and deterioration).

VELUX Electrical Systems & Sunscreening Accessories

5 YEARS:

Parts for electrical systems and sunscreening accessories.

VELUX Commercial Warranty

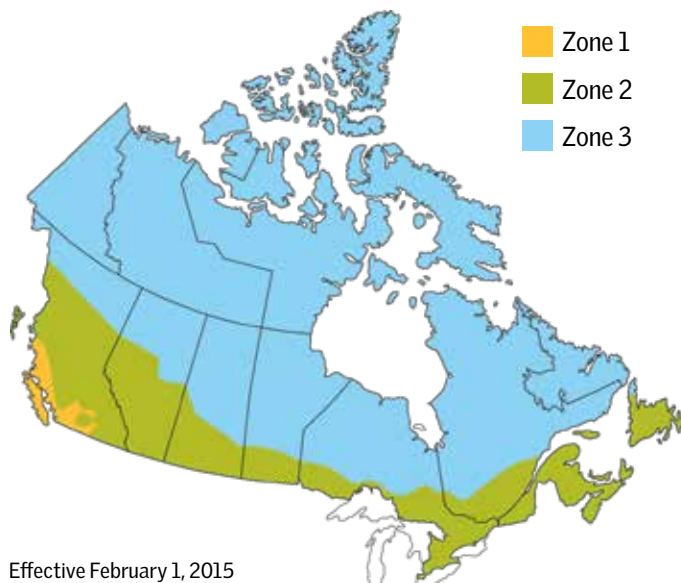
See velux.ca for full warranty details

Limited labour warranty included. See velux.ca or call for full warranty details.

Notice

All glass may be subject to unexpected and spontaneous breakage in rare circumstances due to imperfections in the glass that are undetectable during the manufacturing and inspection process by the manufacturer of the glass and VELUX. VELUX offers the choice of laminated or tempered glass skylights. Laminated glass is a combination of two or more glass sheets with one or more interlayers of plastic (PVB) or resin. In case of breakage, the interlayer is designed to hold the fragments together. Tempered glass does not contain an interlayer to hold the fragments together. Instead, tempered glass is designed to break into small, pebble-like pieces. When tempered glass breaks, pieces of glass come loose and may strike an individual. Consult local regulations and/or building material consultants to determine which type of glass is right for you or if laminated glass is required in your application.

Energy Star zones for skylights



Energy Star ratings for Canada is divided into three climate zones (1, 2, and 3). The climate zones are based on an annual daily average temperature.

VELUX has the best selection of Energy Star certified skylights and Sun Tunnels. Not only do our products meet Energy Star zones to save you money but they are all rigorously tested to perform in the harshest and most extreme climates.

For more information on Energy Star visit www.nrcan.gc.ca/energy

Certifications

VELUX Skylights and Sun Tunnel Skylights, including VSS, VSE, VS, FS, VCS, VCE, VCM, FCM, TMR, TGR, TCR, TMF and TGF have been tested to the following standards and the results have been third party certified.

- **AAMA/WDMA/CSA 101/I.S.2/A440-08** NAFS – North American Fenestration Standard/Specification for Windows, Doors, and Skylights
- **A440S1-09** Canadian Supplement to AAMA/WDMA/CSA 101/I.S.2/A440, NAFS
- **NFRC 100** Procedure for determining fenestration product U-factors.



WDMA
Hallmark Certified

Bringing light to life™



Call or visit our website to find a trained and certified member of the **VELUX Installer Program** in your area.

Head Office
VELUX Canada Inc.
2740 Sherwood Heights Dr.
Oakville, ON L6J 7V5
Phone: 1 800-888-3589
Fax: 1 800-898-3589

Western Office
VELUX Canada Inc.
#2130-550 Sherling Place
Port Coquitlam, BC V3B 0J6
Web: velux.ca
Email: velux-cdn@velux.com



VELUX®

The VELUX Group creates better living environments with daylight and fresh air through the roof. The VELUX product program contains a wide range of roof windows and skylights, along with solutions for flat roofs. The Group also supplies many types of decoration and sun screening, roller shutters, installation products, products for remote control for installation in roofs. The VELUX Group, which has manufacturing companies in 11 countries and sales companies in just under 40 countries, represents one of the strongest brands in the global building materials sector and its products are sold in most parts of the world. The VELUX Group has about 10,000 employees and is owned by VKR Holding A/S, a limited company wholly owned by foundations and family. For more details, visit velux.com.